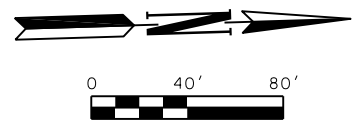
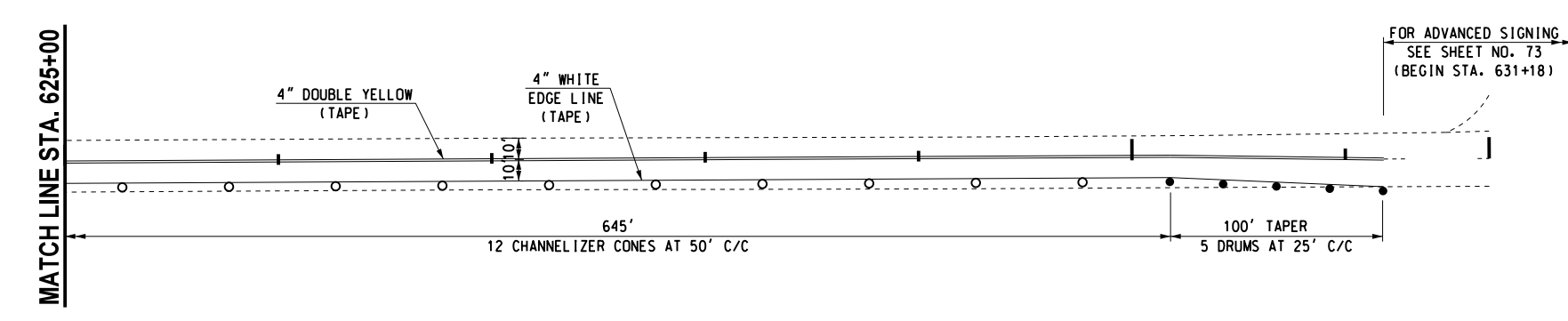
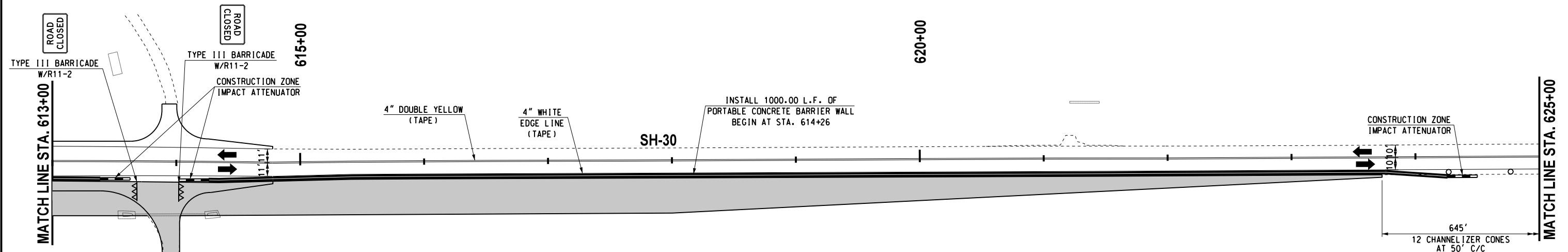
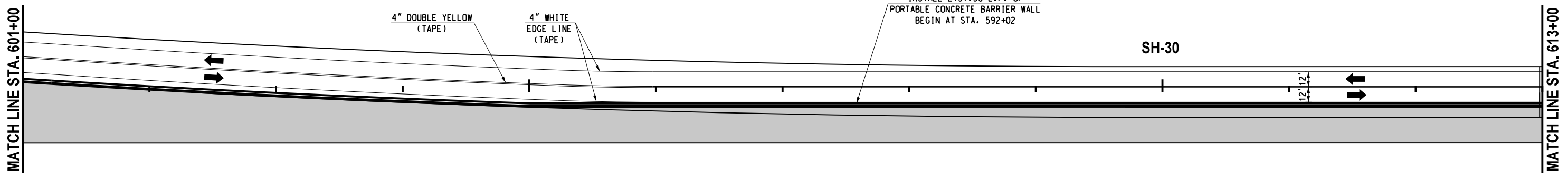


REVISIONS		
NO.	DESCRIPTION	DATE



**CONTRACTOR SHALL KEEP
11' MINIMUM LANES UNLESS
NOTED OTHERWISE.**



SUGGESTED SEQUENCE OF CONSTRUCTION

- PHASE 4. SHIFT TRAFFIC WEST TO NEW BRIDGE AND PAVING OF SH-30 (ONE LANE EACH DIRECTION)
- RELOCATE PORTABLE LONGITUDINAL BARRIER ALONG EAST EDGE OF DETOURED NORTHBOUND LANE
 - REMOVE EXISTING BRIDGE
 - REMOVE EXIST. ROADWAY, FINISH CONSTRUCTION OF REMAINDER OF SH-30 PAVING AND DRAINAGE (C.R.L. SH-30 STA. 563+79.97 TO STA. 576+00 AND STA. 596+00 TO STA. 613+00)

LEGEND	
	- TYPE III BARRICADE W/ TWO TYPE "A" LIGHTS
	- DRUM
	- CHANNELIZER CONE
	- PORTABLE CONC. BARRIER WALL
	- CONSTRUCTION ZONE IMPACT ATTENUATOR
	- WORK AREA

Design	RWR	9/13/2016
Drawn	CCC	9/13/2016



TRAFFIC CONTROL PLANS
PHASE 4
(3 OF 3)

State Job No. 28768(04) Sheet No. 78

9/13/2016 G:\Projects\1-2356 SH 30 over Salt Fork of Red River\CAD\TC PHASE 4B.C - 3.dgn

SH-30 BRIDGE & APPROACHES HARMON COUNTY